

**CCR7 Antibody**  
**Catalog # ASC11750****Specification**

---

**CCR7 Antibody - Product Information**

Application	WB, IHC-P, IF, E
Primary Accession	<a href="#">P32248</a>
Other Accession	<a href="#">NP_001829</a> , <a href="#">4502641</a>
Reactivity	Human
Host	Rabbit
Clonality	Polyclonal
Isotype	IgG
Calculated MW	Predicted: 42 kDa

Application Notes	<b>Observed: 42 kDa KDa</b> CCR7 antibody can be used for detection of CCR7 by Western blot at 1 - 2 µg/ml. Antibody can also be used for Immunohistochemistry starting at 5 µg/mL. For immunofluorescence start at 20 µg/mL.
-------------------	--

**CCR7 Antibody - Additional Information**

Gene ID **1236**

**Target/Specificity**

CCR7; CCR7 antibody is human specific. CCR7 antibody is predicted to not cross-react with other CCR proteins.

**Reconstitution & Storage**

CCR7 antibody can be stored at 4°C for three months and -20°C, stable for up to one year.

**Precautions**

CCR7 Antibody is for research use only and not for use in diagnostic or therapeutic procedures.

**CCR7 Antibody - Protein Information**

**Name** CCR7

**Synonyms** CMKBR7, EBI1, EVI1

**Function**

Receptor for the MIP-3-beta chemokine. Probable mediator of EBV effects on B-lymphocytes or of normal lymphocyte functions.

**Cellular Location**

Cell membrane; Multi-pass membrane protein.

**Tissue Location**

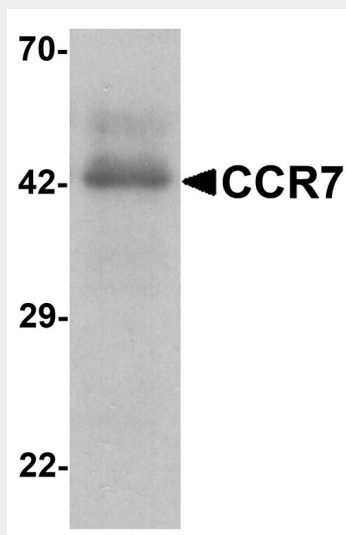
Expressed in various lymphoid tissues and activated B- and T-lymphocytes, strongly up-regulated in B-cells infected with Epstein-Barr virus and T-cells infected with herpesvirus 6 or 7

### CCR7 Antibody - Protocols

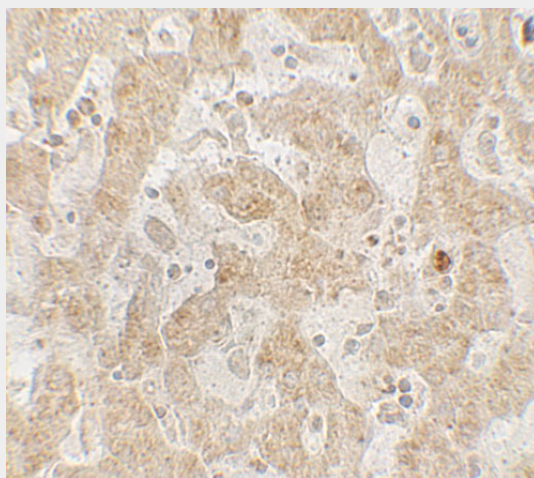
Provided below are standard protocols that you may find useful for product applications.

- [Western Blot](#)
- [Blocking Peptides](#)
- [Dot Blot](#)
- [Immunohistochemistry](#)
- [Immunofluorescence](#)
- [Immunoprecipitation](#)
- [Flow Cytometry](#)
- [Cell Culture](#)

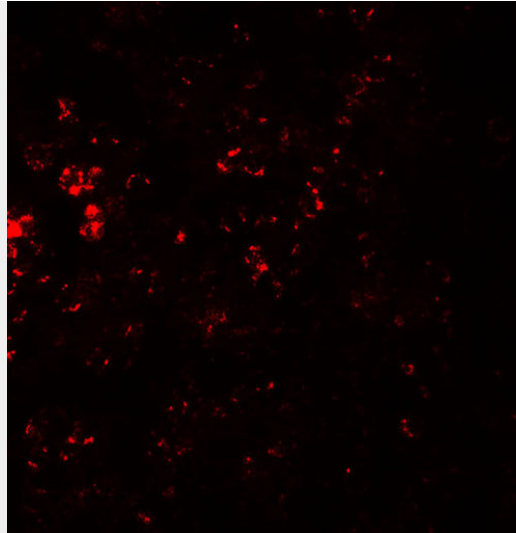
### CCR7 Antibody - Images



Western blot analysis of CCR7 in human spleen tissue lysate with CCR7 antibody at 1 µg/ml.



Immunohistochemistry of CCR7 in human spleen tissue with CCR7 antibody at 5 µg/mL.



Immunofluorescence of CCR7 in human spleen tissue with CCR7 antibody at 20 µg/mL.

### **CCR7 Antibody - Background**

The CCR7 protein is a member of the G protein-coupled receptor family. This receptor was identified as a gene induced by the Epstein-Barr virus (EBV), and is thought to be a mediator of EBV effects on B lymphocytes. This receptor is expressed in various lymphoid tissues and activates B and T lymphocytes. It has been shown to control the migration of memory T cells to inflamed tissues, as well as stimulate dendritic cell maturation (1,2). The chemokine (C-C motif) ligand 19 (CCL19) has been reported to be a specific ligand of this receptor (3).

### **CCR7 Antibody - References**

Birkenbach M, Josefsen K, Yalamanchil R, et al. Epstein-Barr virus-induced genes: first lymphocyte-specific G protein-coupled peptide receptors. *J. Virol.* 1993; 67:2209-20.  
Forster R, Davalos-Misslitz AC, and Rot A. CCR7 and its ligands: balancing immunity and tolerance. *Nat. Rev. Immunol.* 2008; 8:362-71.  
Yoshida R, Imai T, Hieshima K, et al. Molecular cloning of a novel human CC chemokine EBI1-ligand chemokine that is a specific functional ligand for EBI1, CCR7. *J. Biol. Chem.* 1997; 272:13803-9.